



**RESAGULF**  
SCAFFOLDING

[www.rgsksa.com](http://www.rgsksa.com)

# Resa Gulf Scaffolding



## Resa Gulf Scaffolding Co. Ltd.

The synonym of Superior Quality Scaffolding and Service.

**RESA GULF SCAFFOLDING** Is a new name in the scaffolding market but is a brand of two giant and most experienced companies: **Tamimi GROUP** – which is well known brand in Saudi Arabia and **RESA GRUPO** – which is also a raised sun in the Field of Scaffolding Technology.

In this new age where construction activities are significant across the Globe, it is essential to source materials and other such construction related equipment from experienced, trusted, time tested and quality conscious manufacturers complying with international safety norms and standards.

It is imperative that logistics and sticking with stringent delivery schedules are also important to facilitate timely available of necessary equipment in construction sites.

### OUR STRATEGY:



GRUPO RESA



## Mission

### MISSION

To build and maintain innovative solutions in a safe and compliant manner within and outside Saudi Arabia, driven by talent and expertise to fulfill customer satisfaction; whilst maximizing our shareholders' value and commitment to the community.

### رسالتنا

أن نوّفر ونطوّر حلول مبتكرة للطاقة تتوافق مع تطلعات عملائنا، داخل وخارج السوق السعودي، وذلك وفقاً لأعلى المواصفات ومعايير السلامة والجودة من خلال الاستفادة من خبرات وكفاءات موظفينا، مع الأخذ في الاعتبار رفع حقوق مساهمينا والتزاماتنا نحو مجتمعنا.

## Vision



### VISION

To be the Saudi distinguished market leader and primary choice for providing integrated and sustainable energy solutions.

### رؤيتنا

أن نكون الشركة السعودية الرائدة والخيار الأول في السوق لتوفير حلول طاقة متكاملة ومستدامة.



**RESA GROUP** is a multinational corporation comprised of 19 companies who specialized in the design, engineering, manufacture and installation of scaffolding systems with a focus on two integral but distinct areas of activity:

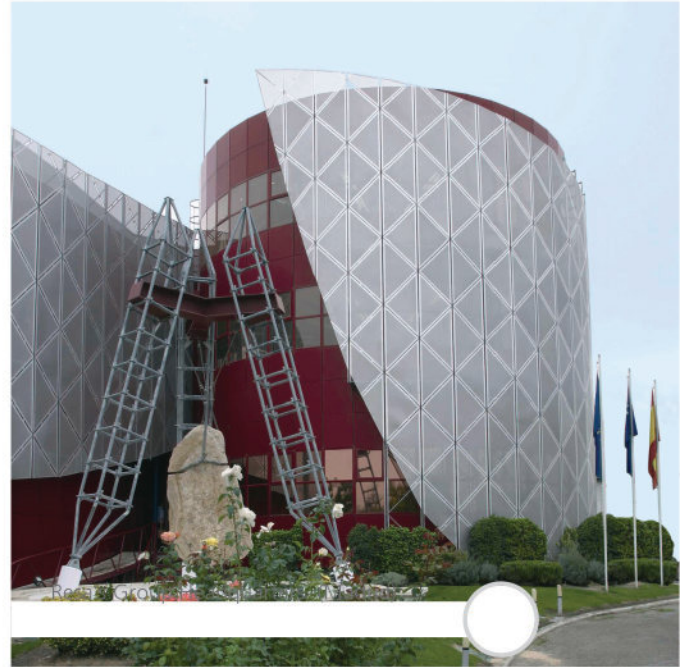
## MANUFACTURE

We have developed, designed and manufactured scaffolding systems focusing on both tubular and motorized versions

## INSTALLATION

We have successfully installed our scaffolding systems for a variety of clients making provisions for their specific requirements (industry, maintenance, construction, etc.)

**The RESA GROUP** began its activity with a very clear objective: to be a leading service-provider for scaffolding in the construction sector. The evolution of the market and RESA'S capacity to anticipate the direction it would take meant that in the 1990's we began to re-orientate our activity towards the Industrial sector. As a result today we are the main provider in this sector at the national level.



## Scaffolding Services And Access Solution

- Commercial advisory.
- Engineering and Design Solutions.
- Transportation.
- Installation and Disassemble Works.
- Skilled Workforce, Specialist Trained and Supervision team Certified by **Saudi Aramco** - Kingdom of Saudi Arabia.
- Inspection - Certified team by **Saudi Aramco** - Kingdom of Saudi Arabia.
- Scaffold Material Supply.

We will assess and offer the best solution for your Requirement, and provide everything from a simple rental to a turn key installation.

# Products



Resa offers a Full Service with wide range of Products. Resa has its own Direct and Indirect Manpower which is Highly Qualified and, furthermore, all our works are carried out paying special attention to Labour Risk Prevention Management.

## Multidirectional Scaffolding System - Advantages

- ✓ Light, Rigid & Fast.
- ✓ The Safest Way.
- ✓ The Better Performances.

Certified Design and Manufacturing Assures Top Quality and Safety.



## Tubular Scaffold

Resablok Multidirectional System  
Modular System R-70



Tubular Scaffold R-70



Tubular Scaffold Resablok



Mast Climbing Work Platform  
MC-36/15



Mast Climbing Work Platform  
MC-10

## Mast Climbing Work Platform

MC-36/15  
MC-10

## Industrial Elevator

R-300



Elevator R-300



Suspended Scaffolding

## Suspended Scaffolding

Electric Hoist  
Air Hoist (ATEX)



Platform Resa Wind

## Special Applications

Resa Wind



## Tubular Scaffold

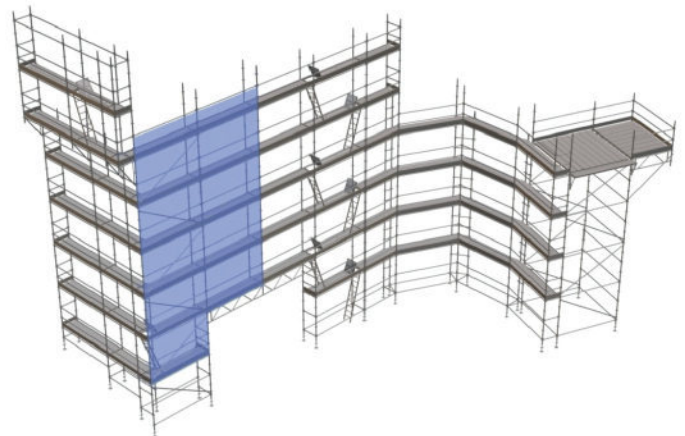
### Resablok System

Resablok is a multi-level, multi-directional scaffolding system, consisting of a set of standard tubular parts assembled and fitted together by means of a system of joints and clamps that gives a final result that is a light, but completely rigid structure

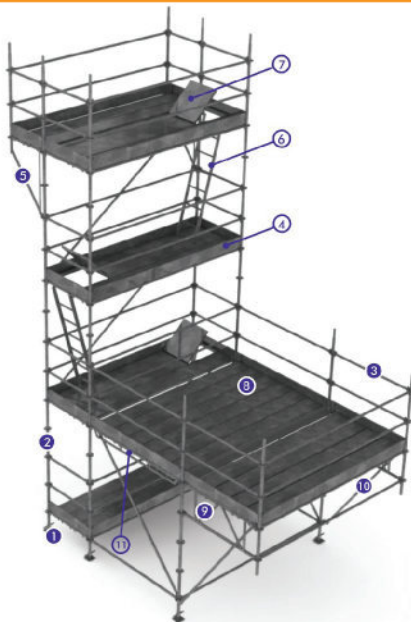


#### Resablok Connector

Series RBN / RBP. Natural Evolution

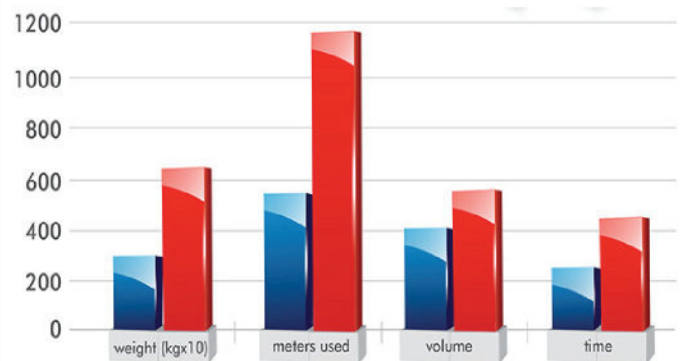


### Main Components



elements	
1	Screw Jack
2	Standard
3	Ledger
4	Toeboard
5	Side Bracket
6	Ladder
7	Double Metal Plank with Trapdoor
8	Platform
9	Light Beam
10	Diagonal Brace
11	Reinforced Ledger

### Max. Productivity Higher Earnings



■ Birdcage Resablok ■ Birdcage Pipe & Fit / Cuplock

Less Time **40%**

Less Weight **30%**

Less Maintenance & Losses **60%**

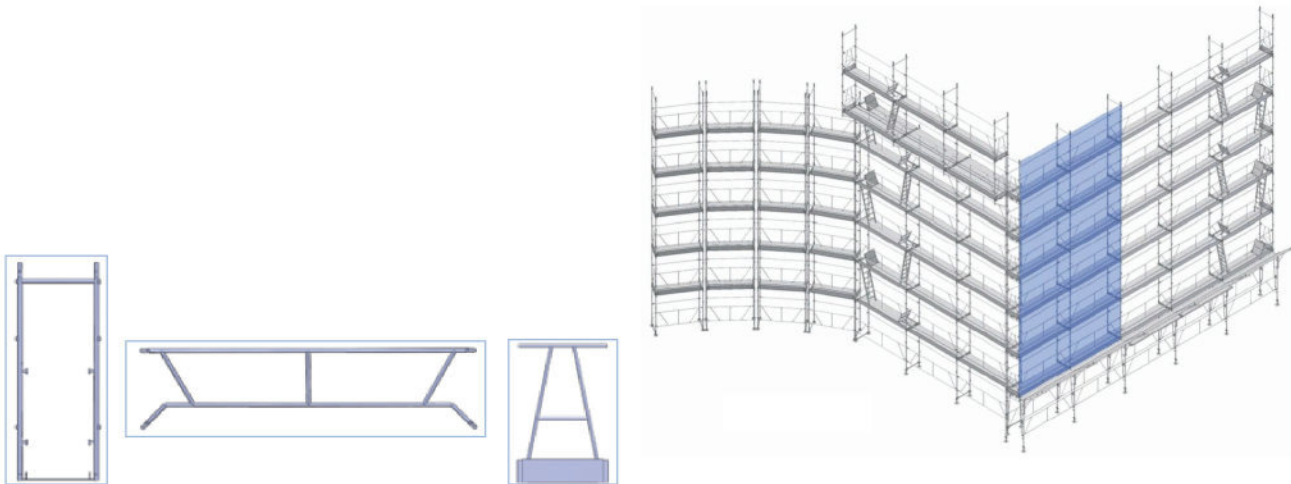
\*In comparison with traditional scaffolding



## Tubular Scaffold

### R-70 System

The R-70 is an European style, modular scaffolding system that is made up of rigid tubular frames assembled together by means of platforms and longitudinal bracing rails that give the whole unit a completely rigid structure.



## Tubular Scaffold Applications

Facade Scaffolding

Birdcage Scaffold

Perimeter Scaffold

Formworks

Access Stairways

Hanging Scaffold

Facade Stabilizers

Temporary Covers

Assemblies in "Pipe-Racks"





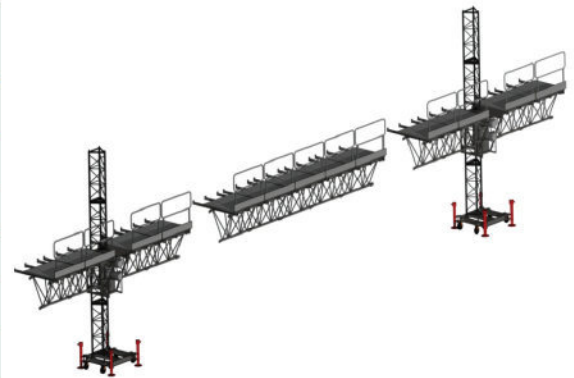
## Mast Climbing Work Platform

### MC-36/15

The MC-36/15 work platform is designed to satisfy the most diverse requirements in the area of repairs, maintenance, exterior finishes, etc.; working with maximum safety

It's multiple assembly possibilities (from 4.8 m in single mast and up to 31 m in twin mast) and the extensions, allow us to adapt ourselves to any workspace.

FEATURES MC - 36/15		
FEATURES	SINGLE MAST	TWIN MAST
Maximum Height	150 m	
Maximum Capacity	1500 kg	3600kg
Max. Nº of Persons	3	5
Working Plan Max. Length.	9,8 m	30,10 m
Working Plan Width	1,35 m	



## Suspended Scaffolding

Resa's Group has a wide range of Suspended Scaffolding which cover a great number of applications.

Suspended Scaffolding allows an easy access to all front parts of any structure. These machines are a long term excellent investment since they are light, safe and easy to install.

Taking into account the kind of work, RESA offers three types of Suspension Systems: telescopic roof beam, adjustable parapet clamp and rolling roof rigging.

Maximum security  
Easy and Quick Assembly

### Types of Suspended Scaffolding

Electric Hoist  
Air Hoist (ATEX)





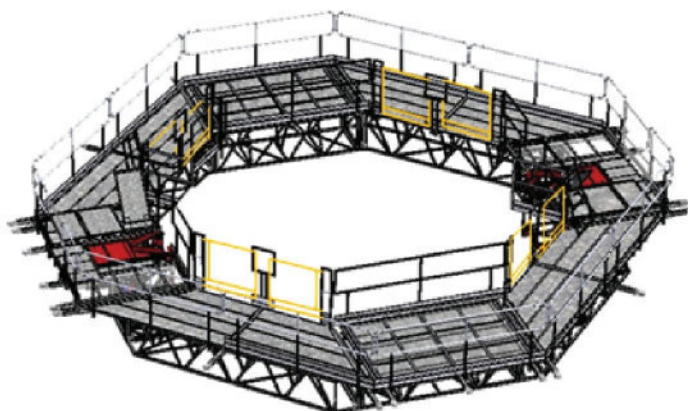
## Resa Wind Platform

The huge experience of Resa Group in the elevation domain made possible its Innovation and Engineering department to launch an specific product for Wind Farms.

Resa Wind Platform provides a comfortable and safety access to carry out construction, inspection and maintenance works at wind farm.

Advantages:

- Increase of productivity.
- Higher ergonomic, comfort and safety for workers
- Time reduction for assembling tasks and works on towers.
- Operations and Maintenance times Reduction.
- Any orientation, any height and peripheral access.



FEATURES RESA WIND	
FEATURES	RESA WIND
Maximum Height	80 m
Speed	5,5 m/min
Total Maximum Capacity	1200 Kg
Max N° of persons	4



## Certifications

Resa's Group counts on the guarantee of a Quality, Prevention and Environment Management System which is certified by Bureau Veritas



Quality - ISO 9001



Environment - ISO 14001



Health & Safety - OSHAS 18001



Our products count on Certificates according to current Regulations.



MC-36/15



Resablok System



MC-10



R-70 System







## Clients

أرامكو السعودية  
saudi aramco



سابك  
sabik



SEPCO  
山东电建



المؤسسة العامة لتحلية المياه المالحة  
Saline Water Conversion Corporation



الشركة السعودية للكهرباء  
Saudi Electricity Company



JACOBS



# Projects



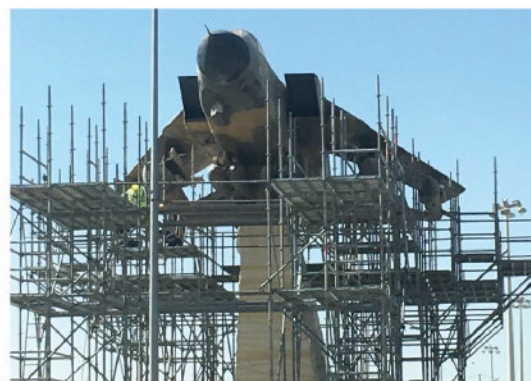
Petrochemicals - Sadara



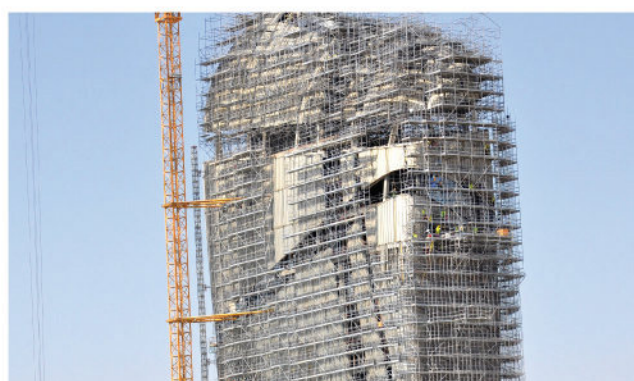
Offshore Services, SAUDI



King Abdullah Financial District Civil Construction - High Rise Buildings



Fighter 15 - Maintenance - King Abdulaziz Air Base



King Abdulaziz Center for World Culture – Scaffolding services with budget around 16,900,000 USD



# References



Petrochemistry

Cepsa's Refinery, Gibraltar



Off-Shore

Adriatic LNG Regasification Platform Maintenance, Italy



Ship building

Dock Shipyard - Navantia Puerto Real



Power

Duct Assembly , Turceni Power Plant, Romania



Industry

Cement Plant Alcalá de Guadaíra, Sevilla



Renewable Energies

Wind Farm Cerro blanco, Albacete - INNEO



Civil Construction

Cinema Sphere Max 3D , Romania



Special Assemblies

Motorized Scaffold at NASA, C. Cañaveral



## **RESA GROUP / RESA PREZIOSO**

Área Empresarial Andalucía

Sector 1 C/ Serranía de Ronda nº 6-8, Pinto – Madrid

Tel. +34 91 691 85 80 Fax. +34 91 691 95 1

Email: [info@gruporesa.es](mailto:info@gruporesa.es)

<http://gruporesa.com>

## **RESA-GULF SCAFFOLDING Co. LTD**

AutoMoto Mall Building-H First Floor - Rakkah

Khobar 31421, DAMMAM - KSA

Tel.: +966138142413 +966138126611

Email: [info@rgksa.com](mailto:info@rgksa.com)

<http://rgksa.com>



**GRUPO RESA**



**RESA GULF**  
SCAFFOLDING



التميمي للطاقة  
**TAMIMI ENERGY**